

5. Khare, P. B. and Chandra, S., Gametophyte morphology of an endangered species of *Cyathea* Sm. *J. Indian Bot. Soc.*, 1995, **74**, 103–106.
6. Klekowski, E. J., Reproductive biology of the Pteridophyta. II. Theoretical considerations. *Bot. J. Linn. Soc.*, 1969, **62**, 347–359.
7. Khare, P. B. and Roy, S. K., Genetic aspects of the capacity of colonization of *Cheilanthes tenuifolia* (Burm.) Sw. *Genetica*, 1977, **47**, 183–185.
8. Khare, P. B. and Kaur, S., Reproductive biology of pentaploid cytotype *Pteris vittata* L. *Phytomorphology*, 1986, **36**, 181–184.
9. Wen-Liang, C., Farrar, D. R. and Ranker, T. A., The mating system of some epiphytic polypodiaceae. *Am. Fern J.*, 2002, **92**, 65–79.
10. Wen-Liang, C. and Farrar, D. R., Comparative gametophyte morphology of selected species of the family Polypodiaceae. *Am. Fern J.*, 1997, **87**, 77–86.
11. Khare, P. B., Regeneration of gametophyte of some homosporous ferns. *Indian Fern J.*, 2001, **18**, 111–114.
12. Lott, M. S., Volin, J. C., Pemberton, R. W. and Austin, D. F., The reproductive biology of the invasive ferns *Lygodium microphyllum* and *L. japonicum* (Schizaeaceae): Implications for invasive potential. *Am. J. Bot.*, 2003, **90**, 114–115.

ACKNOWLEDGEMENTS. We thank Dr P. Pushpangadan, Director, National Botanical Research Institute (NBRI), Lucknow for providing facilities. Thanks are also due to staff of the Pteridology Laboratory, NBRI for help.

Received 7 December 2004; revised accepted 11 March 2005

Isolation of endophytic plant growth promoting *Burkholderia* sp. MSSP from root nodules of *Mimosa pudica*

Piyush Pandey¹, S. C. Kang² and D. K. Maheshwari^{3,*}

¹S.B.S.(P.G.) Institute of Biomedical Sciences and Research, Balawala, Dehradun 248 161, India

²Division of Food, Biological and Chemical Engineering, College of Engineering, Daegu University, Gyeongsan City, Republic of Korea, 712-714

³Department of Botany and Microbiology, Gurukul Kangri University, Haridwar 249 404, India

Endophytic bacteria reside within plant tissues and have often been reported to promote plant growth. Rhizobia are particularly known for their symbiotic relationship with legumes. A bacterial strain MSSP was isolated from surface-sterilized root nodules of *Mimosa pudica*. MSSP was Gram-negative, capsulated, motile, non-endospore forming rod with free nitrogen (N) fixation ability. Unlike N-fixing bacteria forming symbiotic relationship with legumes that largely exist in *a*-subclass of proteobacteria, MSSP belongs to *b*-class of proteobacteria. Phylogenetic analysis of 16 S rDNA demonstrated that

MSSP belongs to the genus *Burkholderia*. This isolate secretes phytohormone, ACC deaminase, solubilizes phosphate and is antagonistic against phytopathogens.

PLANT growth promoting endophytic rhizobacteria are involved with host plants in mutual interaction. They promote plant growth directly or indirectly, via production of phytohormones, biocontrol of host plant diseases or improvement of plant nutritional status¹. Rhizobia are perhaps the best-known beneficial plant-associated bacteria because of their importance in nitrogen fixation². Forthcoming *Bergey's Manual of Systematic Bacteriology* identifies five genera of rhizobia, namely *Rhizobium*, *Sinorhizobium*, *Azorhizobium*, *Bradyrhizobium* and *Mesorhizobium* (www.cme.msu.edu/bergey's, p. 7). They all belong to the *a*-class of proteobacteria, where they are distributed in four distinct phylogenetic branches. However, during the last few years, bacteria from the *b*-class of proteobacteria, other than rhizobia have been reported from legumes³. Here we report a species of *Burkholderia* from the root nodules of *Mimosa pudica*, which belongs to the *b*-class of proteobacteria.

Plants of *M. pudica* were uprooted from the campus of Botanical Survey of India, Dehradun. Nodules were collected, washed several times in sterile water, surface-sterilized using 70% ethanol and 0.1% HgCl₂, and repeatedly washed with sterile water. Sterile nodules were crushed and the resulting suspension was streaked on yeast extract mannitol (YEM) agar plates⁴, which were incubated at 28 ± 1°C. Pure isolates were subjected to phenotypic and biochemical characterization, wherein all isolates appeared similar. Effect of temperature and salinity was observed in 50 ml YEM broth in flasks. The flasks with 0.01, 0.1, 1.0 or 2.0% NaCl were inoculated with log phase culture to a final concentration of 10³ cfu ml⁻¹ and incubated at 28, 35 or 40°C at 150 rpm. Uninoculated broth served as control. Absorbance was measured after different time intervals and growth monitored at 610 nm. Acid production was tested in YEM agar plates supplemented with 25 ppm bromothymol blue indicator dye⁵; change in colour from green to blue indicated alkali reaction, and to yellow, acid production. Carbon source utilization was detected in basal liquid medium⁶ (BLM) which contained K₂HPO₄, 1 g; KH₂PO₄, 1 g; FeCl₃·6H₂O, 0.001 g; MgSO₄·7H₂O, 0.2 g; CaCl₂, 0.1 g; bromothymol blue indicator dye, 25 mg; DDW, 1000 ml with carbon source at a final concentration of 1 g l⁻¹. This was dispensed in tubes (20 mm) as 5 ml aliquot and inoculated by an exponentially growing bacterial culture (≈ 10⁹ cfu ml⁻¹); tubes were incubated at 28 ± 1°C at 150 rpm for 4 days. Change in colour from green to yellow or blue indicated utilization of respective C-source. BLM supplemented with mannitol served as positive control, and that without any C-source as negative control.

Root nodulating ability of MSSP was determined. Surface sterile seeds of *M. pudica*, bacterized⁷ with isolate MSSP were sown in pots with sterile soil. After four months,

*For correspondence. (e-mail: maheshwaridk@indiatimes.com)

RESEARCH COMMUNICATIONS

isolate MSSP formed nodules. Colonies re-isolated from surface-sterilized nodules exhibited phenotypic and biochemical characteristics of strain MSSP verifying Koch's postulate.

Strain MSSP (*M. pudica*) was identified by rDNA analysis. Pure cultures were grown till log phase and genomic DNA was isolated according to Bazzicalupo and Fani⁸. A large fragment of 16S rDNA was amplified by PCR using primers 5' AGG AGG TGA TCC AAC CGC A 3' and 5' AAC TGG AGG AAG GTG GGG AT 3'. A 50 µl reaction mixture included 5–10 ng of DNA as template, 1 µM of each primer, 1 U of Taq DNA polymerase and 100 µM dNTPs. The PCR product was purified and sequenced. Searches in the EMBL/Gen Bank/DDBJ/PDB data libraries were performed using BLAST (blastn) search algorithm⁹ in order to establish the identity of the isolate. Sequences of the close relatives were retrieved and aligned with the newly determined sequences. Multiple alignments were performed with CLUSTALX¹⁰. Phylogenetic analysis used the neighbour-joining method and programs¹¹ in PHYLIP version 3.6. The 16S rDNA sequence of the following strains (type strains unless otherwise indicated) were obtained from GenBank (accession numbers in parentheses): *Burkholderia* sp. AB 101 (gb/AF219126), *Burkholderia* sp. AB2 (gb/AF219125), *Burkholderia* sp. CEB01056 (emb/AJ491304), *Burkholderia* sp. m35b (gb/U96937), *Burkholderia pyrrocinia* (dbj/AB021369), *B. cepacia* (gb/U96927), *B. viet-*

namiensis (gb/U96929), *B. multivorans* (dbj/AB092606), *B. gladioli* (dbj/AB024491), *B. plantarii* (gb/U96933), *B. glumae* (gb/U96931), *B. mallei* (gb/AY305760), *B. pseudomallei* (gb/AY305818) and *B. phexaninium* (gb/U96936).

A neighbour-joining dendrogram was generated using the sequence from MSSP and representative *Burkholderia* sequences from EMBL/Gen Bank/DDBJ and PDB (Figure 1). Phylogenetic analysis of 16S rRNA of MSSP strain revealed that it does not belong to any of the four branches of rhizobia known in the *a*-subclass of Proteobacteria, but belonged to the *b*-subclass of Proteobacteria. From this analysis, it appeared to belong to a new species of *Burkholderia*. MSSP was separated from other *Burkholderia* clusters (except

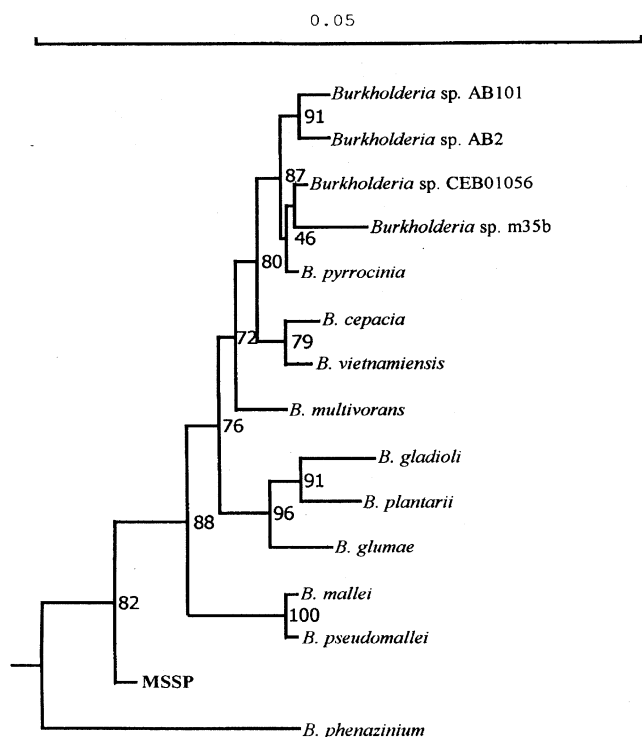


Figure 1. Phylogenetic relationship between MSSP and representative *Burkholderia* species based on full length 16S rDNA sequences constructed using the neighbour joining method. Bootstrap values (from 1000 replication) are indicated. Accession numbers are reported in text.

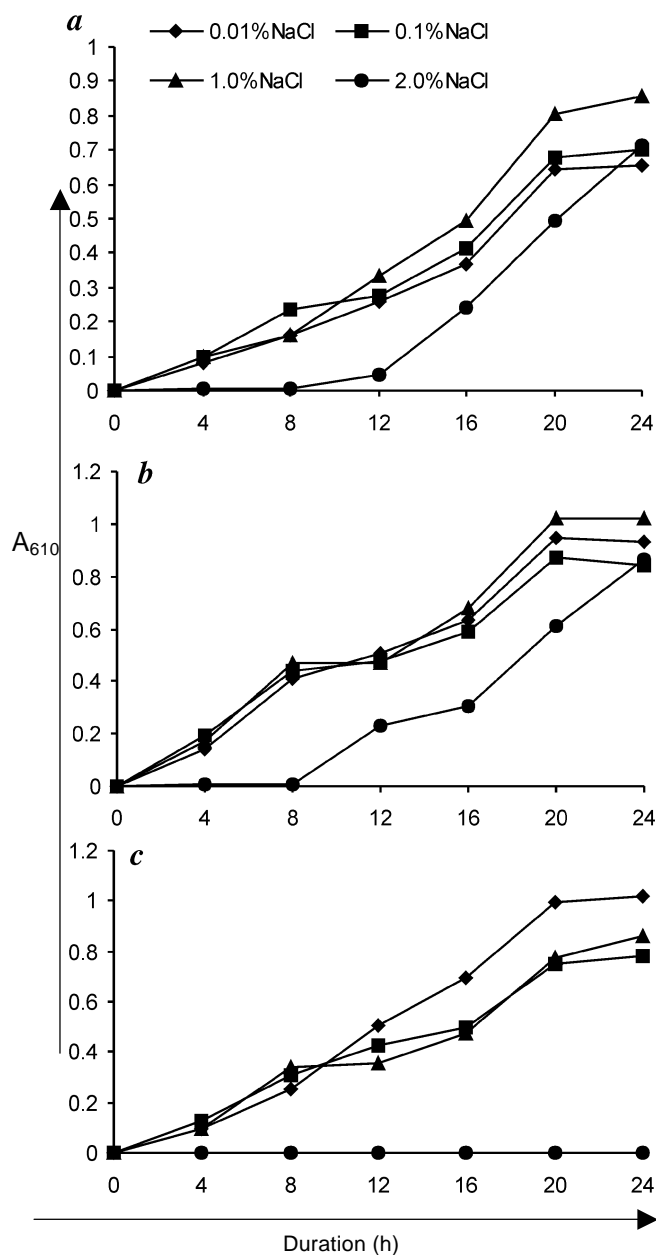


Figure 2. Effect of salinity and temperature on growth of MSSP: (a) 28°C, (b) 35°C and (c) 40°C.

Table 1. Phenotypic and physiological properties of *Burkholderia* sp. MSSP

Isolate	MSSP		
Host	<i>M. pudica</i>		
Colony diameter (mm) on YEMA (3 days, 28°C)	2–3		
Growth at	28°C	35°C	40°C
0.01% NaCl	Positive	Positive	Positive
0.10% NaCl	Positive	Positive	Positive
1.00% NaCl	Positive	Positive	Positive
2.00% NaCl	Positive	Positive	No growth
Acid production on YEMA	Positive		
Gram reaction	Negative		
Motility	Positive		
Capsule	Positive		
Endospore	Negative		
Shape	Rod		
Starch hydrolysis	Positive		
Gelatin hydrolysis	Positive		
H ₂ S production	Negative		
Catalase	Positive		
Oxydase	Positive		
Growth on glucose peptone agar	Positive		
Growth on Hofer's alkaline medium	Negative		
C-source utilization			
Sucrose	Positive ↑		
Galactose	Positive		
Ribose	Negative		
D-xylose	Positive ↑		
Mannitol	Positive		
Maltose	Positive		
Mannose	Negative		
Inositol	Negative		
Arabinose	Positive		
Plant growth promoting activities			
ACC deaminase production	Positive (0.45 IU/ml after 72 h)		
Nitrogen fixation	3.14 n mol C ₂ H ₂ /min/mg protein		
Phosphate solubilization	Phosphate solubilization index (PSI) = 2.15		
IAA production	Positive		
Siderophore production	Positive		
HCN production	Positive		
Antagonistic activity	<i>Rhizoctonia solani</i> – Positive <i>Sclerotinia sclerotiorum</i> – Positive <i>Fusarium oxysporum</i> – Negative <i>Macrophomina phaseolina</i> – Negative		

↑, Gas production; PSI, Clear zone diameter/growth diameter.

B. phezanium) with bootstrap value of 82%. As per our knowledge, this is the first report of *Burkholderia* sp. isolated from nodules of *M. pudica*. Earlier, *Burkholderia* strain STM 678 and *Burkholderia* strain STM 815 have been reported from the nodules of *Aspalathus carnosus* and *Machaerium lunatum*¹² respectively. However, *Ralstonia taiwanensis*¹³ and *Ralstonia eutropha*¹⁴ have earlier been reported from the nodules of *Mimosa*. The nucleotide sequence of 16S rDNA of MSSP is as follows (GenBank accession number: bankit 602753 AY551271):

AGGAGGTGAT CCAACCGCAC CTTCCGATAC GGC
TACCTTG TTACGACTTC
ACCCAGTCA TGAATCCTAC CGTGGTGACC GTC
CTCCTTG CGGTTAGACT

AGCCACTTCT GGTA AAAACCC ACTCCCATGG TGT
GACGGGC GGTGTGTACA
AGACCCGGGA ACGTATTCAG CGCGGCATGC TGA
TCCGCGA TTACTAGCGA
TTCCAGCTTC ATGCACTCGA GTTGCAGAGT GCA
ATCCGGA CTACGATCGG
TTTTCTGGGA TTAGCTCCCC CTCGCGGGTT GGC
AACCTC TGTTCCGACC
ATTGTATGAC GTGTGAAGCC CTACCCATAA GGG
CCATGAG GACTTGACGT
CATCCCCACC TTCTCCAGT T

MSSP is Gram-negative, capsulated, motile, non-spore forming rod. Phenotypic and physiological properties of *Burkholderia* sp. MSSP are given in Table 1. At 28 and 35°C,

lower concentrations of NaCl (0.1 and 1.0%) favoured growth of MSSP, while 2% NaCl extended the lag phase. At 40°C, the organism failed to multiply in 2% NaCl, although it grew fairly well at lower concentrations (Figure 2).

Despite the large diversity of legumes (up to 18000 species) and a great number of species forming nodules, rhizobia of ~11,200 nodulating species are uncharacterized. Therefore, current taxonomy and phylogeny of rhizobia are based on isolates from nodules of only 10% of 750 genera. As suggested, India is a mega biodiversity centre and studies of symbionts of the yet unexplored legumes may unravel the presence of new types of bacterial groups in their nodules¹⁴. The plant growth promoting activity of MSSP was determined by accessing the factors which directly or indirectly benefit the plants¹. ACC deaminase production¹⁵, nitrogen fixation¹⁶, phosphate solubilization¹⁷, IAA production¹⁸, siderophore production¹⁹, HCN production²⁰ and antagonistic activity²¹ against different phytopathogens. *Burkholderia* sp. MSSP was positive for almost all these characteristics, indicating its role in promotion of growth of host plant while colonizing the roots.

Microbial diversity is considered as one of the most useful resources for bioprospecting. Rhizobia are of particular interest due to their symbiotic nitrogen fixing ability with legumes. As more knowledge is acquired and isolates from unexplored legumes are studied, new species are discovered and former species are split. Due to improved methods of characterization, the classification of rhizobia has undergone drastic changes and the phylogenetic analysis of the family Rhizobiaceae and related genera has been upgraded²² and recently reviewed³.

Note added in proof: Subsequent to the submission of this paper, the article entitled 'Isolation and anti-fungal activities of 2-hydroxymethyl-chroman-4-one produced by *Burkholderia* sp. MSSP' by J. G. Kang *et al.* was published in *The Journal of Antibiotics* (2004, **57**, 726–731).

- Glick, B. R., The enhancement of plant growth by free-living bacteria. *Can. J. Microbiol.*, 1995, **41**, 109–117.
- Bai, Y., D'Aoust, F., Smith, D. L. and Driscoll, B. T., Isolation of plant growth promoting *Bacillus* strains from soybean root nodules. *Can. J. Microbiol.*, 2002, **48**, 230–238.
- Sahgal, M. and Johri, B. N., The changing face of rhizobial systematics. *Curr. Sci.*, 2003, **84**, 43–48.
- Vincent, J. M., *A Manual for a Practical Study of Root Nodule Bacteria*, 1970, Blackwell Pub., Oxford.
- Somasegaran, P. and Hoben, H. J., *Methods in legume – Rhizobium technology*. NifTAL Project and MIRCEN, University of Hawaii, HI, 1985.
- Amarger, N., Macheret, V. and Laguerre, G., *Rhizobium gallicum* sp. nov. and *Rhizobium giardini* sp. nov. from *Phaseolus vulgaris* nodules. *Int. J. Syst. Bacteriol.*, 1997, **47**, 996–1006.
- Weller, D. M. and Cook, R. J., Suppression of take-all of wheat by seed treatment with fluorescent pseudomonads. *Phytopathology*, 1983, **73**, 463–469.
- Bazzicalupo, M. and Fani, R., The use of RAPD for generating specific DNA probes for microorganisms. In *Methods in Molecular*

Biology. Species Diagnostic Protocols: PCR and Other Nucleic Acid Methods (ed. Clap, J. P.), Humana Press Inc, Totowa, NJ, 1995, pp. 155–175.

- Altschul, S. F., Madden, T. I., Scaffner, A. A., Zhang, J., Zhang, Z., Miller, W. and Lipman, D. J., Gapped BLAST and PSI-BLAST: A new generation of protein database search program. *Nucleic Acids Res.*, 1997, **25**, 3389–3402.
- Thompson, J. D., Gibson, T. J., Plewniak, F., Jeanmougin, F. and Higgins, D. X., The CLUSTALX windows interface: Flexible strategies for multiple sequence alignment aided by quality analysis tools. *Nucleic Acids Res.*, 1997, **25**, 4876–4882.
- Felsenstein, J., PHYLIP phylogeny inference package. Version 3.6, Department of Genome Sciences and Department of Biology, University of Washington, Seattle, WA, USA, 2004.
- Moulin, L., Munive, A., Dreyfus, B. and Boivin-Masson, C., Nodulation of legumes by members of the *b*-subclass of proteobacteria. *Nature*, 2001, **411**, 948–950.
- Chen, W.-M., Laevens, S., Lee, T.-M., Coenye, T., de Vos, P., Mergey, M. and Vandamme, P., *Ralstonia taiwanensis* sp. nov. isolated from root nodules of *Mimosa* species and sputum of a cystic fibrosis patient. *Int. J. Syst. Evol. Microbiol.*, 2001, **51**, 1729–1735.
- Tripathi, A. K., Rhizobia of the *b*-subclass of proteobacteria: A tale of losing the race. *Curr. Sci.*, 2002, **82**, 8–9.
- Honma, M. and Shimomura, T., Metabolism of ACC. *Agric. Biol. Chem.*, 1978, **42**, 1825–1831.
- Pagan, J. D., Child, J. J., Scowcraft, W. R. and Gibson, A. H., Nitrogen fixation by *Rhizobium* cultured on a defined medium. *Nature*, 1975, **256**, 406–407.
- Subbarao, N. S., *Advances in Agricultural Microbiology*, Oxford and IBH, India, 1982.
- Gupta, C. P., Sharma, A., Dubey, R. C. and Maheshwari, D. K., *Pseudomonas aeruginosa* as a strong antagonist of *Macrophomina phaseolina* and *Fusarium oxysporum*. *Cytobios*, 1999, **99**, 183–189.
- Schwyn, B. and Neilands, J. B., Universal chemical assay for the detection and determination of siderophores. *Anal. Biochem.*, 1987, **160**, 47–56.
- Millar, R. L. and Higgins, V. J., Association of cyanide with infection of birdsfoot trefoil by *Stemphylium loti*. *Phytopathology*, 1970, **60**, 104–110.
- Skidmore, A. M. and Dickinson, C. H., Colony interaction and hyphal interference between *Septoria nodorum* and phylloplane fungi. *Trans. Br. Mycol. Soc.*, 1976, **66**, 57–74.
- Pandey, P., Sahgal, M., Maheshwari, D. K. and Johri, B. N., Genetic diversity of rhizobia isolated from medicinal legumes growing in the sub-Himalayan region of Uttaranchal. *Curr. Sci.*, 2004, **86**, 202–207.

ACKNOWLEDGEMENT. Thanks are due to CSIR (TMOP&M), New Delhi for financial assistance to D.K.M.

Received 27 August 2004; revised accepted 17 February 2005